

# Animal Crackers

Featuring the In The Wild Collection

QUILT DESIGN BY CYNDI WALKER OF STITCH STUDIOS FOR HOFFMAN CALIFORNIA FABRICS



FINISHED SIZE: 54" x 68"

FREE PATTERN AVAILABLE AT [WWW.HOFFMANFABRICS.COM](http://WWW.HOFFMANFABRICS.COM)

# Animal Crackers

FEATURING THE IN THE WILD COLLECTION

FINISHED SIZE: 54" x 68"

## FABRIC REQUIREMENTS

- 1 1/2 yards - Cream Animals
- 1 1/4 yards - Green Animals
- 1/2 yard - Green Animal Dot
- 1/2 yard - Pink Stripe
- 1/2 yard - Pink Dots
- 1/2 yard - Brown Dots
- 1/2 yard - Green leaves
- 1/2 yard - Binding (Brown Dots)
- Backing (Green Animal Toss)

## CUT THE FABRICS

All measurements based on 42" wide fabric. WOF = Width of Fabric

- |   |  |
|---|--|
| From the cream animals, cut:  | From the pink dots, cut:   |
| • 20 - 10 1/2" squares  | • 20 - 5 1/2" squares  |
| From the green animals, cut:  | From the brown dots, cut:  |
| • 7 - 5 1/2" x WOF strips, pieced together and cut into:<br>4 - 5 1/2" x 54 1/2" strips | • 5 - 2 1/2" x WOF strips, pieced together and cut into:<br>2 - 2 1/2" x 50 1/2" strips<br>2 - 2 1/2" x 44 1/2" strips |
| From the green animal dot, cut:   | • 7 - 2 1/4" x WOF binding strips  |
| • 20 - 5 1/2" squares   | From the green leaves, cut:  |
| From the pink stripe, cut:  | • 20 - 5 1/2" squares  |
| • 20 - 5 1/2" squares   |  |

## MAKE THE BLOCKS

1. Mark a diagonal line on the wrong side of a 5 1/2" leaves square, a 5 1/2" green animal dot square, a 5 1/2" pink stripe square and a 5 1/2" pink dots square.
2. Right sides together, align the marked green animals square to one corner of a 10 1/2" cream animals square and sew along the marked line (Fig. 1). Trim the excess fabric leaving a 1/4" seam allowance, and press the triangle away from the center.
3. Following the same process, sew a marked green animal dot square to the opposite corner of the cream animal square (Fig. 2); press the triangle away from the center.
4. Repeat this process for the remaining two corners of the cream animal square using the marked pink dots and pink stripe squares so that pink dot is in the lower left hand corner and the pink stripe square is in the upper right hand corner with the strips running horizontally (Fig. 3). The completed block should measure 10 1/2" square, including seam allowances.

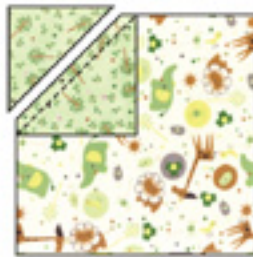


Fig. 1

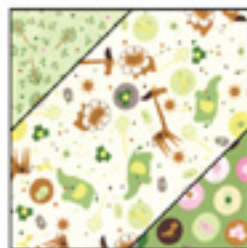


Fig. 2

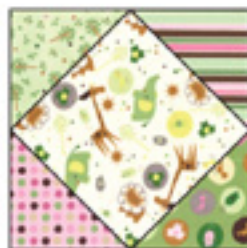


Fig. 3

## ASSEMBLE THE QUILT

1. Referring to the quilt assembly diagram for placement, sew the blocks together into five rows of four blocks. Rotate the blocks as necessary so that the stripes meet together. Press the seams in opposite directions for each row. Join the rows together to complete the quilt center; press the rows in one direction.
2. Sew a 2 1/2" x 44 1/2" brown dots strip to the left and right edges of the quilt center; press toward the brown dots. Sew a 2 1/2" x 50 1/2" brown dots strip to the top and bottom edges of the quilt center; press toward the brown dots.
3. Sew a 5 1/2" x 54 1/2" green leaf strip to the left and right edges of the quilt center; press toward the green leaf. Sew a 5 1/2" x 54 1/2" green leaf strip to the top and bottom edges of the quilt center; press toward the green leaf.

## FINISH THE QUILT

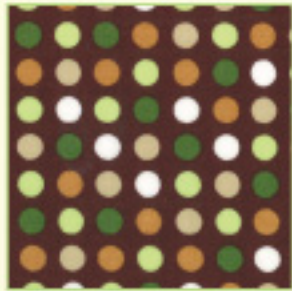
1. Layer the quilt top, batting and backing and pin the layers together. Machine or hand quilt the layers together.
2. Join the 2 1/4" brown dots binding strips end-to-end to make binding for your quilt. Fold the binding in half, wrong sides together, and press. Sew the binding to the edges of the quilt top and blind stitch in place.

QUILT ASSEMBLY DIAGRAM



# In The Wild

By HOFFMAN FABRICS



170150-1



170150-4



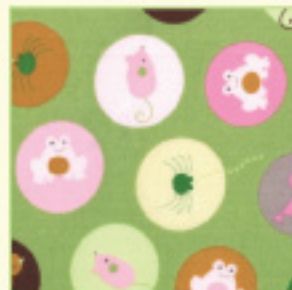
170150-11



170150-12



170150-14



170150-15



170150-16