

All American Picnic Quilt



by
Paintbrush Studio

Copyright 2010 SLM Designs LLC all rights reserved

Designed by Susan L. Meyer
www.susiequilting.com

Finished size approximately 64 1/4" x 80 1/2"

All American Picnic Quilt

Cutting Directions:

Fabric A – Large floral print in red white grey and blue - Blocks A & B

Fussy cut 4- 8" squares centering the red flower

Fussy cut 4-8" squares centering the grey flower

Fabric B - Red background with white daisy – Alternate Block C

Cut 3 strips 8" by WOF (width of fabric)

Subcut into 9- 8" squares

Fabric C – Medium blue background with small red flower – Sashing Cornerstones

Cut 3 strips 4 ½" wide by WOF

Subcut into 18 - 4 ½" squares

Fabric D – White background with blue and red print – Setting Triangles

Cut 2 strips 12 ½" wide by WOF

Subcut into 4 – 12 ½" squares – Then subcut EACH square into 4 triangles by cutting diagonally from one corner to the opposite corner twice. You will only need 14 of the 16 cut triangles.

Fabric E – Medium blue tonal – Sashing strips and edge cornerstones

Cut 1 strip 4 ½" by WOF

Subcut into 6 – 4 ½" squares for edge cornerstones

Cut 11 strips 2 ½" by WOF

Fabric F – Navy blue tonal – sashing strips and edge cornerstones and binding

Cut 1 strip 4 ½" by WOF

Subcut into 4 – 4 ½" squares for edge cornerstones

Cut 19 strips 2 ½" by WOF

Fabric G – Red tonal – inner border

Cut 8 strips 2" by WOF

Fabric H – Large navy print with red and white daisies – outer border

Cut 8 strips 6 ½" by WOF

Fabric I - Medium Blue with daisies - backing

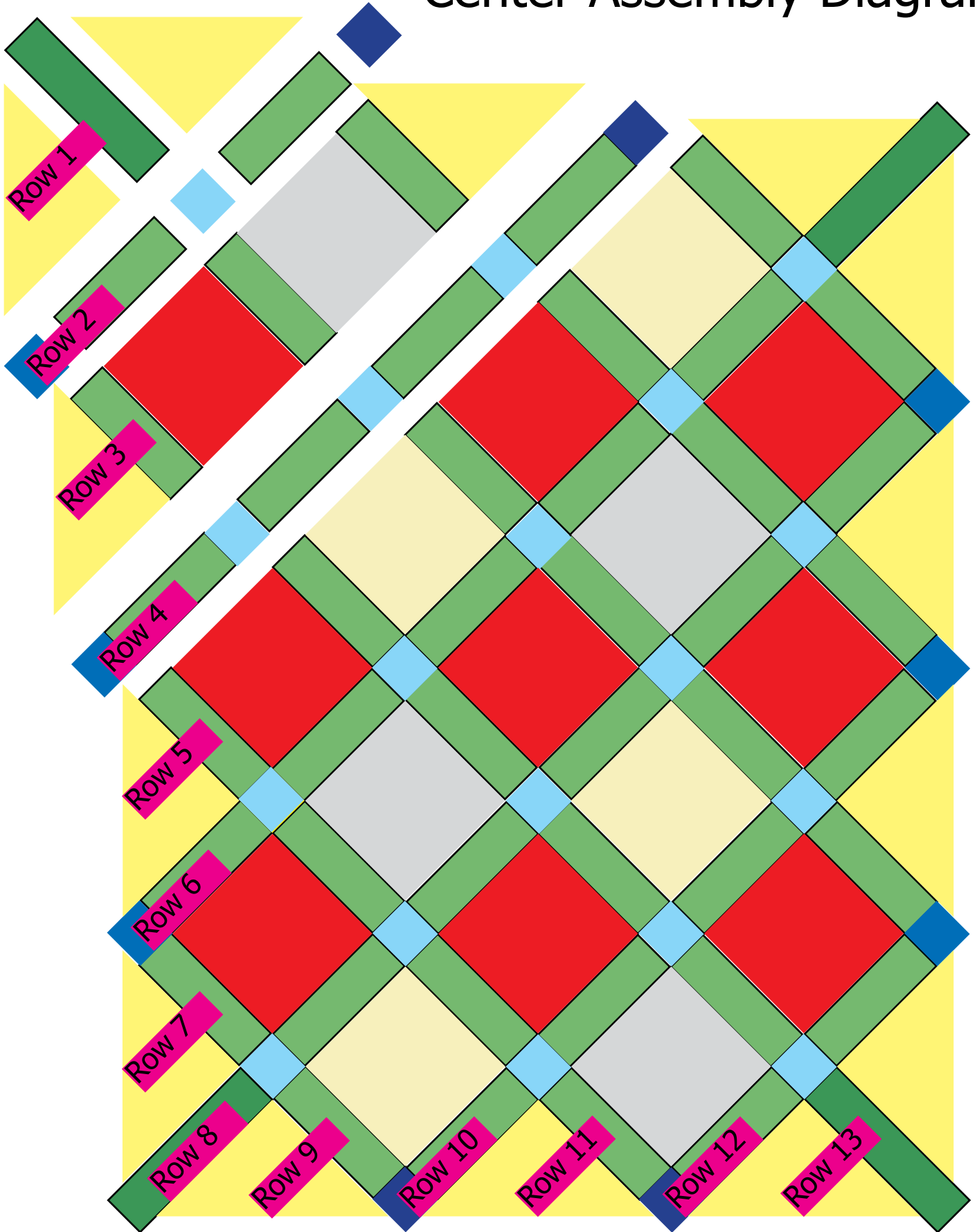
Piecing the Sashing:

1. Sew the long side of a 2 ½" strip of fabric E with same of Fabric F. Press seam toward the darker fabric. The resultant strip set should be 4 ¼" by WOF. Make 11.
2. From 9 of the above sets cut 44 rectangles 4 ½" x 8"
3. From the remaining 2 strip sets cut 4 rectangles, 4 ½" x 13" these will be used at the 4 corners.

Quilt Center Assembly:

4. Referring to the quilt center assembly diagram, piece row 1 together using two Fabric D setting triangles and one longer sashing rectangle. Note the blue sashing rectangle should extend beyond the sashing triangle on one end. The opposite end should be flush, making a straight line. Press toward the blue sashing. Make row 13 the same way.
5. The even numbered rows are sashing rows. Assemble each row per diagram. Rows 2, 4, 10 and 12 start and end with a setting rectangle (either tonal blue or navy). On the Diagram green represents the rectangles that are half Fabric F and half Fabric E. Be sure to look at the quilt picture on page one to see which side of the rectangles frames which blocks. Fabric F small squares are along the top and bottom and Fabric E small squares are on both sides. Row 6 starts with a blue tonal square, but ends with a long sashing rectangle. Row 8 starts with a long sashing rectangle and ends with a blue tonal square. Press away from the small squares.
6. The remaining odd rows are assembled starting and finishing with a setting triangle. In between the setting triangles is sashing rectangles alternated with an 8 inch square. Press towards the sashing rectangles. Please note the setting triangle is longer than the sashing rectangles and extend beyond the sashing on one side.
7. Pin the rows at the intersections; sew the rows together. Press toward the bottom of the quilt.
8. Trim away the excess fabric from all four sides. The edge of the quilt should be ¼" beyond the intersection of the setting triangle and the tonal blue setting squares. The quilt should measure approximately 48 ¾" x 65". Actual results may vary.

Center Assembly Diagram



Border Assembly:

9. Piece inner border into 4 pieces 2" wide by twice the width of the fabric. (approx 80")
10. Measure both sides of the quilt; calculate the average of the two sides and add 1/2" then cut two pieces of inner border that length. Sew to sides.
11. Measure both top and bottom of the quilt; calculate the average of the two and add 1/2" then cut two of the pieces of the inner border that length. Sew one to the top and one to the bottom.
12. Piece inner border into 4 pieces 6 1/2" wide by twice the width of the fabric. (approx 80")
13. Measure both sides of the quilt; calculate the average of the two sides and add 1/2" then cut two pieces of inner border that length. Sew to sides.
14. Measure both top and bottom of the quilt; calculate the average of the two and add 1/2" then cut two of the pieces of the inner border that length. Sew one to the top and one to the bottom.

Finishing:

15. Layer with batting and backing, then quilt as desired.
16. Piece binding into one continuous strip. Press seams open.
17. Bind using your favorite method.

All American Girl Fabric

from

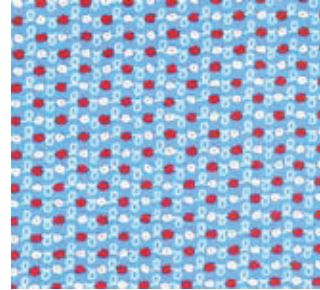
Paintbrush Studio



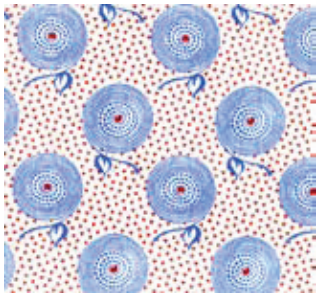
Fabric A - 1 1/2 yards
Fussy cut blocks A & B
style 120-1201
non fussy cut 1/2 yard



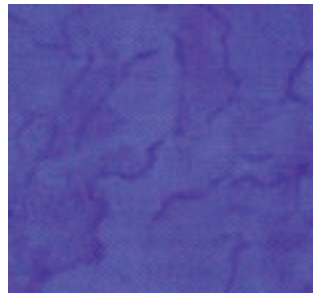
Fabric B - 1/2 yard
Alternate block C
style 120-1211



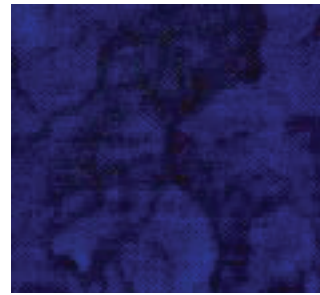
Fabric C - 1/2 yard
Sashing cornerstones
style 120-1291



Fabric D - 3/4 yard
Setting Triangles
style 120-1311



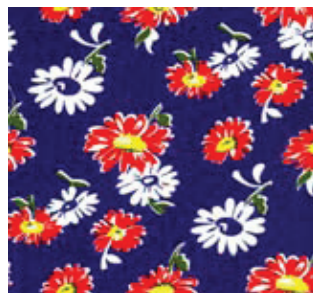
Fabric E - 1 yard
Sashing & edge cornerstones
style 112-964519



Fabric F - 1 1/2 yards
Sashing, edge cornerstones
style 112-964518 binding



Fabric G - 1/2 yard
Inner Border
style 112-964524



Fabric H - 1 1/3 yards
Outer Border
style 120-1251



Fabric I - 5 yards
Backing
style 120-1221